

MERRY CHRISTMAS

ISSN 14440970

The Skeleton

THE
NEWSLETTER OF THE
AUSTRALIND FAMILY HISTORY SOCIETY
(INC.)

Affiliated with WA Genealogical Society (Inc.)



INSIDE THIS ISSUE

Editorial
AFHS Services
Dates for your Diary
President's Report
Web Corner
Welcome to New Members
Members' Interests

FEATURE ARTICLES:

Alverstoke Memories	Page 5-7
The Transcontinental Railway	10-11
The Town That Never Was!	14-17
Xmas Quiz Answers	19

WE'RE ON THE WEB

www.australindfhs.org

THE AUSTRALIND FAMILY HISTORY SOCIETY INC.

Library and Research Centre

Situated at: Australind Library Complex,
off Paris Road, Australind WA 6233

All correspondence to:
The Secretary
PO Box A279
Australind WA 6233

Phone: (08) 9796 1050

Email: alindfhs@iinet.net.au

Website: www.australindfhs.org

Honorary Office Bearers

President	Chris Shaw	9725 4783
Vice President	Anne Kirkman	9796 0263
Secretary	Glenice Stamp	9725 9667
Treasurer	Chris Riley	9796 0286
Membership Sec.	Marg Smith	9725 1779
Librarian	Pam Ayers	9797 1383
C'tee Members:		
	Carol Sims	9724 1178
	Kate Bullock	9725 9445
	Jayne Denham	9797 1629
	Avalon Donovan	9797 0198

Annual Subscriptions: 1 Jan 18- 31 Dec 18

Single Membership \$35
Joint Membership \$45

Single Membership (Senior over 60) \$25
Joint Membership (Senior over 60) \$35

LIBRARY HOURS

Tuesday 10 am - 4 pm
Wednesday 10 am - 4 pm
Thursday 10 am - 4 pm

Non-member charges
Use of library \$5 per session

A researcher is available to conduct
research on behalf of the Society

Contact Mr Alan Reynolds via the Library on
9796 1050 or email: alindfhs@iinet.net.au

Research

Initial Fee \$10 for 2 hrs
Additional \$ 5 per hr
Photocopying and Postage extra



Your Contributions . . .

Please email articles for the next newsletter to the Australind website with
'Newsletter' in the Subject line or leave in the tray at the Family History
Library: alindfhs@iinet.net.au

Deadline for the receipt of articles for next edition of the *Skeleton*.

15th March 2018



Disclaimer

The Society does not hold itself responsible for statements or opinions expressed by authors of papers published in this newsletter. The accuracy of offers, services or goods appearing here cannot be vouched for by the Society. The Editorial Team reserves the right to condense and edit articles to meet the approved size limits of our newsletter.

Message from the Editorial Team

Hello Everyone,

We can't believe it's Christmastime again even though a lot has happened during the year. Firstly, the main event was in April when we celebrated the 175th Anniversary of the first settlers arriving in Australind at Alverstone. *You can now find photos of this event on our website.*

In August we had a speaker, Cate Pearce, come along and give a DNA Talk which proved very popular, so popular in fact that Cate will be returning to do another DNA Talk in March 2018.

This edition of *The Skeleton* is full of interesting articles and stories as well as a Xmas Quiz - why not give it a try?

We hope you enjoy reading this and if you've missed any of the previous editions, you can find back-copies on our website.

****We are attaching our Membership Renewal Forms for 2018.**

We will be back in the New Year (Tuesday, 23rd January 2018) ready to start again helping you with your family tree research!

Wishing you all a safe and happy Christmas,

Jayne & Anne
The E-Team



(Marg - Thanks again for your help with the newsletter - it's greatly appreciated)

DATES for your DIARY

Closing Wednesday 6th Dec and **Re-Opening** Tuesday 23rd January 2018.

DNA TALK (follow-up) by Cate Pearce
Lot 28 rooms
Saturday 24th March 2018.
Cost \$10 (light lunch provided)

"Pioneer Picnic" - at Alverstone in April 2018
Descendants of all pioneering families in WA- date to be advised

Committee meetings: Last Friday of the month. 10am.
AFHS Library.

WAGS Library open Mon 9:30 - 20:00
Wed-Fri 9:30 - 14:30 Sat 13:00 - 17:00
www.wags.org.au

TIP: Don't forget to bring along your USB thumb drive to save files from your web research.

AFHS SERVICES

Library Visit

Affiliated Societies - no charge (show membership card)
Non members - \$5 per visit

Membership

1 Jan 2018 – 31 Dec 2018.

Computer Use

Internet Access -includes Ancestry.com + Find My Past and many more.

All users	\$2 per hr
Printouts	30c each
Burn CDs	\$1 each

Micro Film/Fiche Readers/ Pro Scan

All users	\$2 per hr
Printouts	30c each

Photocopying

A4 B&W single	20c	Double-sided	30c
A4 Colour single	30c	Double-sided	50c
A3 B&W single	30c	Double-sided	60c

Ring Binding

Up to 50 sheets	\$2
-----------------	-----

Laminating

Please ask at desk

President's Report

Hello to fellow members and researchers,

Welcome to the December 2017 *Skeleton*, thanks to the girls who put this together for us all to read.

Australind Family History Society is now on Facebook with help from Nicole Edwards of the Geraldton FHS. Nicole and I attended the WAGS Symposium last month and she told me this is the way to go to attract new young members to our Society. Go to www.facebook.com/AustralindFamilyHistorySociety - and check it out.

The Sausage Sizzle went really well. This was held on 7th October, a very cold day! The clientele was very steady all day which kept our volunteers busy but not rushed off their feet. The profit was \$900 - so well done to all who helped. I have tried to send emails to the volunteers but for some reason the emails did not go. I will email each person individually.

There has been a concern from a member of the public about headstones at Karrakatta being destroyed after 50 years. Having a family headstone at Karrakatta, I approached the staff there and they did remove my family headstone and kept it for me until they could reposition it. It seems only in the case of not being able to get in contact with family members do they destroy headstones which they use as gravel around the Cemetery. If anyone has a family headstone at Karrakatta, please get in contact with the staff there and they will arrange a plan for your family headstone. I visit my family headstone often and am very pleased with the repositioning.

Enjoy reading *The Skeleton*



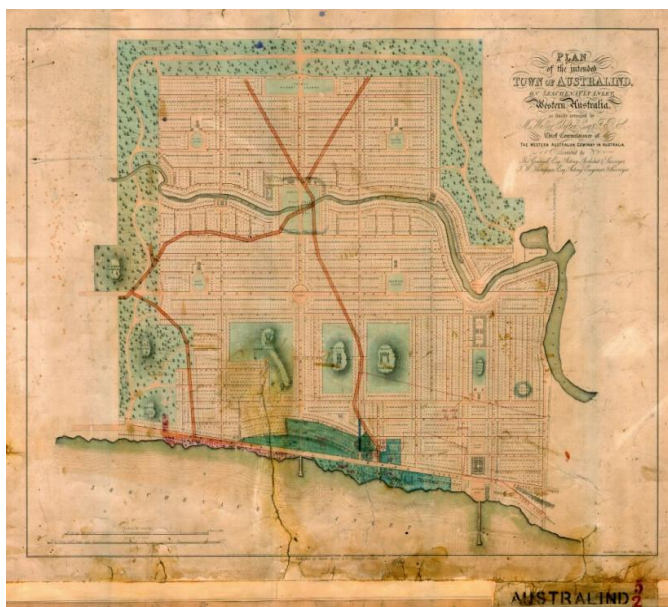
Merry Christmas and a Happy New Year to you all,

Cheers

Chris Shaw

THE TOWN THAT NEVER WAS!

*Plan of the intended Town of Australind
as finally arranged by M. Walter Clifton Esq FRS.
[Tally No. 005627]*



<https://cataloguedata.wa.gov.au>

For more on this story turn to pages 14-17.



>>>>>

XMAS QUIZ 1. After leaving Bethlehem, to which country did Joseph, Mary and Jesus travel?

Continuing on from our previous newsletters this year, we are happy to include in this edition - Richard Elphick's recollections of visiting Alverstoke as a child:-

ALVERSTOKE MEMORIES

by Richard Elphick



THE EARLY VISITS

I am a great, great, great grandson of Marshall Waller Clifton.

It was in 1955 that I first visited *Alverstoke*, known as 'The First Farm On The Brunswick', together with my sister Jocelyn, and brothers Harry and Ken. I was the second son. Our ages then were 15, 13, 12 and 8 years respectively.

We were put on the *Australind* train at Perth Railway Station, by our mother Mollie, after boarding a bus or tram from our family home in Monash Avenue, Hollywood. There was no motor car in my family when I was growing up, as my mother did not drive and my father Geoffrey had died in 1954 aged just 59 years, when I was 11.



Clifton sisters, Emily & Cecile in 1919
(photo from book '*Alverstoke*' by Emily K Clifton)

It was during the school holidays, as we were all attending schools at the time. The residents at *Alverstoke* were our cousins, Emmy, and her sister Cecile, and Les Clifton, who was the manager of the dairy farm. All of us children always addressed the two ladies as 'Cousin Emmy', and 'Cousin Cely', but we addressed Les, simply 'Les', who was a first cousin of our mother's, as their fathers were brothers.

My mother would often comment about Emmy's lovely complexion, and she lived a long and productive life as a primary school teacher for many years in and around Brunswick. She died in 1990 aged 98. Celia predeceased her in 1966 aged 75. They are both buried in the Australind Pioneer Cemetery, and are remembered by us from those days long ago with a great deal of love and affection.

We did not travel by train on long trips that often, so it was always quite a thrill and an adventure for us all when we did. The only other times were when we had holidays were at Harvey in the 1940s where my mother and her four younger sisters had grown up. This was on a small dairy farm

called *Merriedale*, which was located on the corner of South West Highway and Uduc Road which still is the main access way in to the Harvey township from the Highway.

In 1950, our grandmother and grandfather - Mary and Lionel Clifton –sold the farm to a developer and it was then sub-divided in to housing lots. They subsequently moved to Mandurah in to an old weather-board house with an iron roof on the corner of Tuckey and Suttons Streets only a few hundred metres from the water front and shopping areas.

The block was a quarter of an acre - (about 1000 sq. metres) and grandad was able to plant quite a large and productive vegetable garden which supplied most of the vegetables for their table for many years. (A few years ago I wrote a tribute to my grandfather, and called it 'Grandad's Garden'.)

OUR ARRIVAL AT BRUNSWICK JUNCTION

We were met by Les with his car at the Brunswick Junction railway station, and we always found him to be very friendly and accommodating as far as we children were concerned. All of us always thought highly of him. Both my younger brother Ken and I attended his funeral in 1996.

In those times *Alverstoke* (which was named after Marshall Waller's birthplace in the U.K.) - was still in what I believe was probably in its near original condition. There may have been some changes but I, at that time, I was not really aware of them if there were any. During the last few years the old home has been modernized somewhat and there is now a family residing there, connected to the Clifton family. John and Mary Clifton are now the proud owners of *Alverstoke*.

OUR STAYS AT THE FARM

We Elphick children stayed in two of the bedrooms and I can still recall being provided with a hot brick wrapped in a towel to be used as a hot water bottle during the cold winter nights on the farm.

There was an incident once when we saw some white curtains billowing in the wind at night, that spooked us all a bit and made for some fun and comments about whether there were ghosts and if the old house was perhaps haunted. There was not a great deal of actual sleeping on that particular occasion.

Looking at the old milking sheds today they look so small and quite cramped and one wonders how there was enough room to do the milking each morning and afternoon.

I would have a guess that the size of the herd in those days was around 70 - 80 cows containing a few mixed breeds like Fresian, Guernsey, and Jersey, with possibly a few crossed Shorthorns included.

Of course we were small children then and for me personally I did not really have my "growth spurt" until I was about 15 years old, so back then it was not a problem at all when I was in the milking shed. Today, I have to walk around much more carefully.

Another time that I can easily recall was when we 'helped' Les to apply some super phosphate to one of the back paddocks. He drove the tractor and we boys would empty the bags of super in to the spreader on the back of a dray. We all had great fun and hoped that we were actually helping, and not hindering Les in his work.

One other highlight was when Les would take us to the pictures in Brunswick - (these days the word 'Junction', is rarely used) - and once again we would all be buzzing with excitement at the thought of enjoying what was a rare treat for us.

Everything that we did on the farm was always looked forward to with much anticipation and enjoyment. Even if it was just walking around and discovering the trees, flowers and bird life. We were never bored during our several stays there. Of course there was no television in those days, so we had to make our own fun, and this we did very easily, and with great gusto and enthusiasm.

Every morning Les would join us after milking for breakfast, which the sisters always prepared and served. Beautiful toast done to perfection by using a long toasting fork in an open-kitchen-fire, which we would then cover with one of the delicious home-made jams. Cereal would either be porridge or perhaps Weeties or Weetbix, as an alternative.

There was a young man aged in his early twenties who helped with the farm duties and he came from the Seychelles Islands which are located in the Indian Ocean, east of the African coast. He spoke with an accent and was very friendly and had a good sense of humour, and would laugh easily and often with us.

I think that my teenaged sister had quite a 'crush' on him in those early days and he remained a friend of my family for many years afterwards, and eventually married and raised his own family here in Australia.

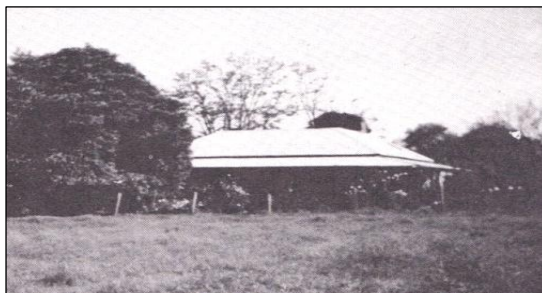
We were always quite sad when Les would drive us to the Brunswick train station at the end of our holiday to begin our ride home to the city, and then back to school.

FAMILY REUNIONS AT ALVERSTOKE

During the last few years I and some of my own children and grandchildren, returned to *Alverstoke*, first for a 'Clifton Family only reunion' in March 2013. Then again in April 2017 to another reunion for families connected to the first settlers to arrive at Australind, in the ships from the U.K. - the *Trusty*, *Parkfield*, *Diadem* and the *Island Queen*. All of them arrived in WA in the early 1840s. The Cliftons sailed in the *Parkfield*, which arrived here on 18th March 1841. Both times a great day was had by all in attendance, and the weather was just perfect, too.

Although I was raised in Perth, which I do love also - (I was born very close to the Swan River in Nedlands) - I am happiest when I am out in the country or in the Australian bush, particularly in the south-west of this beautiful and diverse State. I well remember my very first visit to the 'Valley Of The Giants' near Walpole, WA in the 1970s. I had quite a spiritual experience as I slowly walked through the huge Tingle trees some of whom are hundreds of years old. It made me feel quite insignificant, and 'at one' with Nature.

I am very happy in telling people that *Alverstoke* will always be special to me and one that holds an unique place in my heart. It is, and always will be, regarded and referred to by me as 'My Spiritual Home'.



Life brings tears, smiles and memories.

The tears dry.

The smiles fade.

But the memories last forever.

>>>>>

GLENICE'S 80th BIRTHDAY PARTY



Pictured here with her three grandsons is one of our most popular librarians/researchers - Glenice Stamp - celebrating her 80th birthday.

Congratulations Glenice from all of us

[illegible]

PARMELIA

This picture of the ship *Parmelia* is displayed in the AFHS' library and was donated by Life Member, Daphne Foulkes-Taylor. Her ancestor, John Taylor owned a shipping line.

One of his ships was the *Parmelia*, a barque that was used to transport the first civilian officials and settlers of the Swan River Colony to Western Australia in 1829.

The *Parmelia* held the record for sailing from Liverpool to Melbourne, even though becalmed for a week. However it was just "pipped at the post" for the record by the famous *Cutty Sark* even though the *Cutty Sark* wasn't becalmed for a week.



>>>>>



XMAS QUIZ 3. Every elf has this ornament on the tip of their shoes. Which ornament are we talking about?

THE TRANSCONTINENTAL RAILWAY 100 Year Anniversary 17th October 2017



*West meets East with the completion of the rail-line between Oladela and Kalgoorlie
at 1.45pm Wednesday, 17th October 1917.*

When Federation was being discussed Western Australia was reluctant to join the Commonwealth, but John Forrest (Premier 1890-1901, and son of early settlers to Australind under the Western Australian Land Company), fought hard to ensure the terms upon Federation would not disadvantage West Australian citizens.

Part of those terms was the promise of a rail-line connecting the West with the East, facilitating closer connection with the other colonies. The proposed line altered the thoughts of many of the electorate and in the referendum held, the people voted YES to the Federation in January 1901.

Sir John Forrest speaking October 1917:-

"I rejoice to see the day Western Australia comprising one third of the continent, hitherto isolated and particularly unknown, is from today, in reality, a part of the Australian Federation."

John Forrest having been an explorer had traversed the vast expanse of the Nullabor Plain and knew the magnitude of the task in constructing the rail-line, dubbed 'The Desert Railway'. Surveys of the Plain were not undertaken until 1907; these took two years to complete indicating a distance of 1711km for a cost of £4,000. The eventual cost was £7,000 at a distance of 1690km. This significant cost caused further delays and it wasn't until September 1912 that construction began.

"I desire on the occasion of the turning the first sod of the Transcontinental Railway to express my keen sense of the importance of this great national enterprise to my people in the Commonwealth and my best wishes for its complete success."

Message from King George V.

Despite the conditions of severe heat and cold, flies, typhoid, a barren landscape and the commencement of WWI causing shortage of materials and man-power labour, rail construction continued averaging two miles and forty chains per day. Two Roberts Track laying machines were imported from America that enabled a steady progress laying sleepers and tracks.

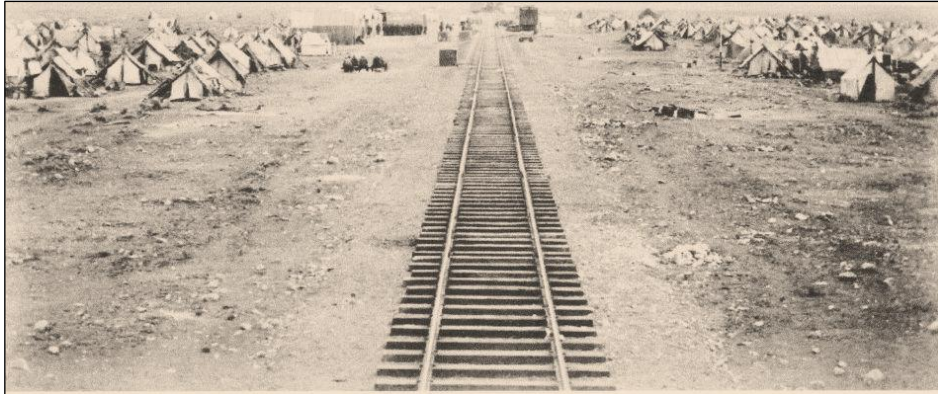
Dense timber country in the south-west provided sleepers for the Transcontinental Railway at the number one State sawmill - Deanmill, Western Australia.

Sleeper Contracts - WA government 680,000 Powellised karri at 5 shillings each, delivered at Manjimup, WA. Subject to reduction of one penny per hundred super feet for Powellings.

Bunbury Herald, 10th April 1918.

The Steamer *Bulbra* is timed to arrive at Bunbury this morning to take a full load of timber for the Eastern States on account of Lewis and Reid. Included in this shipment will be 20,000 sleepers for discharge at Port Lincoln, which will be used on the Transcontinental Railway. Mr R Forrest is the local agent for the vessel.

Bunbury Herald, 19th December 1912.



Workers tents on either side of the railway line during the construction of the Trans-Australia line

The terrain is covered in spinifex and saltbush interspersed with salt lakes and very little water. Therefore water was carted or underground bores were established. Men lived in portable canvas settlements that included a post office and bank, a mess, tap beer and cordial tent (strong liquor was banned, but sly-grogging was endemic.) All shifted along the line as track-laying proceeded.

One team of men worked the Eastern end of the line at Port Augusta and the other from the Western end at Kalgoorlie. The two teams met in October 1917. An amazing feat.

"...so long has lingered this vast undertaking unexplained in some respects in the history of railway construction that it requires a mental effort to realise its actual accomplishment."

West Australian, 18th October 1917.

At last the continent could be crossed by rail. The project has employed more than 2,500 men, used 2,500,000 sleepers and 140,000 tons of flat-bottomed steel rail.

Today the line is an important freight route between WA and the Eastern States and provides a passenger service aboard the Indian Pacific, a journey of three days covering 4352km.

>>>>>



XMAS QUIZ 4. *Everyone is familiar with the mistletoe tradition. What is the colour of the berries of the plant?*



Period: 1940s at a farm in WA. Christmas day was spent with such a gathering of cricket-mad family members, the occasion was just right for a decent game of cricket. After a traditional Christmas lunch, leaving the ladies to have a good natter while clearing away and washing up, the rest of us were out to the 'cricket pitch'. I remember feeling very grown up being allowed to have a turn at batting. How we didn't all fall in a heap running around in the heat all afternoon amazes me. The ladies came to join in the game after their kitchen chores were done.

By Kate Bullock



LIBRARY – LATEST ACQUISITIONS

Many thanks to the generous people who have donated books to the Library.

From Bedford to Brunswick and Beyond	Judy Hawkins
A Town Like No Other	Kate Bullock
Bridgetown the Early Years. Settlement of Warren Blackwood.	Richard Elphick
Bridgetown the Early Years. People of Warren Blackwood.	Richard Elphick
Coppin Family Reunion.	
Windy Harbour Settlement.	Pat Filinski
Kendenup Stories.	Patricia Good
E T Hooley. Pioneer Bushman (Canning Stock Route)	Patricia Herrmann
Eastwood to the Avon	Australind Library
The Australind Letters of Marshall Waller Clifton	Australind Library

A SPECIAL MENTION

We would like to thank Life Member, Daphne Foulkes-Taylor for donating the following books to our library:-

4 Genealogical Research Directories 2003-2007
4 Bicentennial Dictionaries of WA 1829-1888
2 Dictionaries of WA 1868-1888
1 Dictionary of WA FREE 1850-1868
1 Dictionary of WA - The Golden Years 1889-1914
"A Colony Detailed. The First Census of Western Australia 1832" by Ian Berryman

**We now have duplicate copies in the library.*

Daphne also left her own books to sell at the library:-

"Hamersley. From the Old Iron Chest" - \$20 and "Foulkes and Connections" - \$15.

Please contact us if you're interested in purchasing a copy.

**** WELCOME TO OUR NEW MEMBERS ****

713	Dr Deborah Robertson	Bunbury	717	Linda Johnson	Brunswick Jctn
714	Marie Waddingham	South Bunbury	718	Phillis Lorite	Australind
715	Audrey Aarons	Lilydale, VIC	719	Wendy Wallace	South Bunbury
716	Jim Johns	Harvey	720	Jo Trench	Eaton

[illegible]

GENEALOGY

It begins as an interest.
It evolves into a hobby.
It becomes an obsession.

*On the Twelfth Day of Christmas,
My true love gave me,
Twelve census searches,
Eleven printer ribbons,
Ten E-mail contacts,
Nine Headstone rubbings,
Eight Birth and Death dates,
Seven Town Clerks singing,
Six second cousins,
Five Coats of Arms,
Four GEDCOM files,
Three old wills,
Two CD-ROMS,
And a Branch in my Family Tree!*

Names are not always what they seem.
The common Welsh name Bzjxxllwap is pronounced Jackson!

[illegible]

Capel History Recorded at the Cemetery

After four months of hard work and research, a team of more than 30 community members have launched the first Capel Cemetery Register.

Jacqui Graham has been the driver of the project after a community inquiry for cemetery records revealed there was minimal registered information available. Ms Graham said the group of volunteers involved in the project grew to 30 people, who had a range of interests and personal connections which helped reveal information at the cemetery. "This is a fantastic register for visitors and locals to have access to burial information on family, relatives and friends," she said. "We hope that research into the site will continue beyond the register being created."

Some of the research revealed that pioneers and descendants of settlers from the Swan River Colony are interred at the site. It is understood there are three convicts buried within the cemetery and the oldest reported inhabitant passed away aged 105.

The register is presented in a simple table format, listing the grave number, name, age of burial and location at the cemetery.

For more information about the records, contact the Shire of Capel on 9727 0222 or email localhistory@capel.wa.gov.au.

>>>>>



XMAS QUIZ 5. How does Santa Claus go back up the chimney to continue his journey of delivering gifts

THE TOWN THAT NEVER WAS!



AUSTRALIND MONUMENT

Situated on the water's edge of the Leschenault Inlet stands a stone monument and plaque commemorating the pioneers of the Australind Land Settlement, supposedly where the first settlers landed.

On the plaque is inscribed the following:

"The Australind Settlement (on Wakefield principles) was formed in 1841 on the Eastern side of Leschenault Inlet by Western Australian Company.

A town site of 1000 acres was surveyed and the division of 10,000 acres into small farms was planned. Through causes beyond the control of settlers and despite the labours of the Chief Commissioner Marshall Waller Clifton, FRS, the achievement fell short of the vision.

This memorial recalls the vision. It commemorates those hardy pioneers who continued here in face of great difficulty and records the benefit Western Australia received from the coming of settlers and officials in the ships:-

Island Queen December 1840

Parkfield March 1841

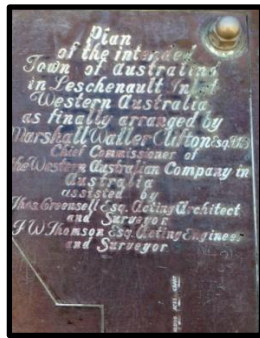
Diadem April 1842

Trusty December 1842

Erected by public subscription and the Western Australia Historical Society 1938."

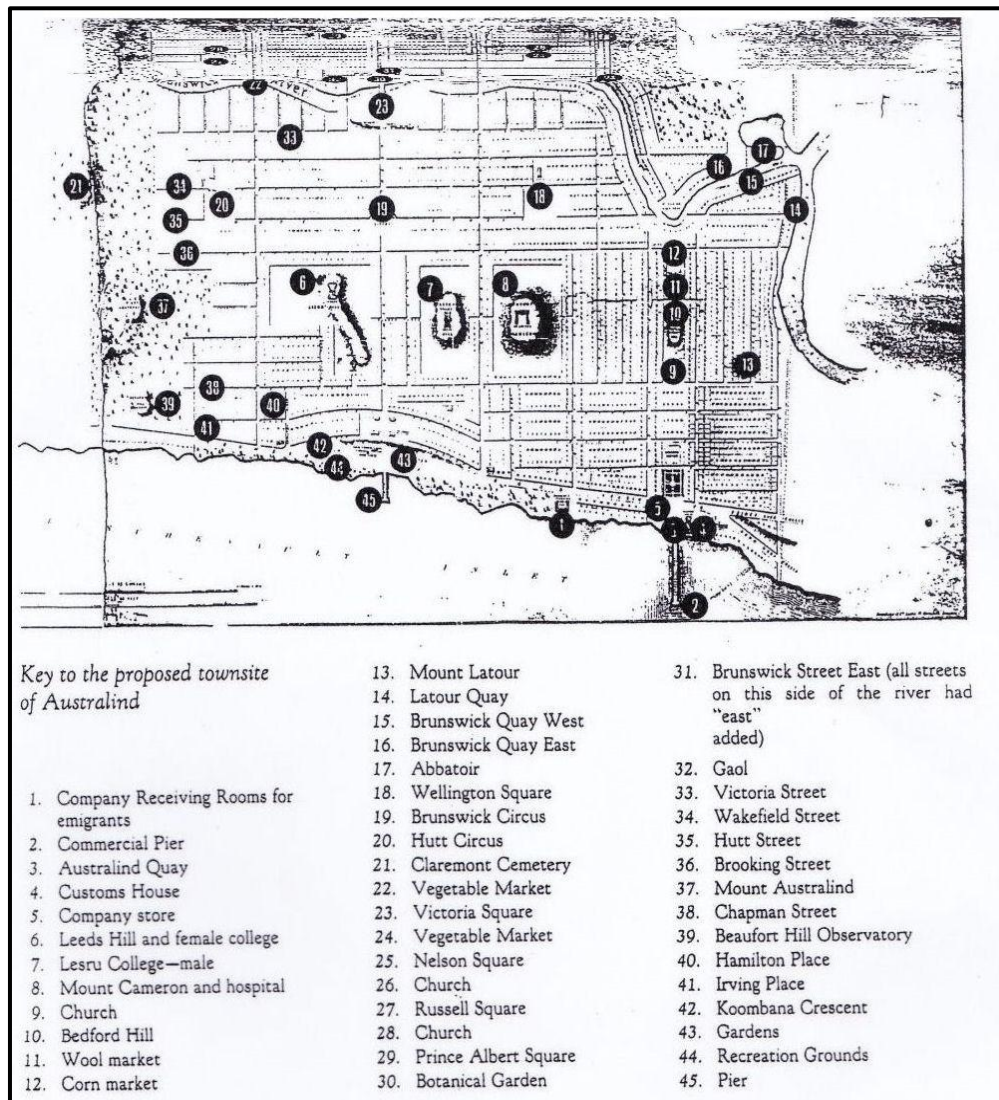
On the **reverse** side of the monument is a plan and inscription of the proposed townsite.





"Plan of the intended Town of Australind as finally arranged by Marshall Waller Clifton Esq, FRS, Chief Commissioner of the Western Australia Company in Australia assisted by Thos. Greensell Esq, Acting Architect and Surveyor, J W Thomson Esq, Acting Engineer and Surveyor."

Here is the plan with a key to help identify more clearly the proposed sites of the town.



A memorial to the pioneers of the Australind settlement, which has been erected from public subscriptions by the Western Australian Historical Society (Inc.) will be unveiled by His Excellency the Lieutenant-Governor (Sir James Mitchell) on Saturday afternoon. The ceremony will begin at 3 p.m. The chairman of the Bunbury Road Board (Mr. F. Guthrie) will preside at the ceremony and a short paper on the history of the settlement will be read by Miss E. L. Burgess, of the Bunbury High School, who has made a close study of the subject.
The West Australian (Perth), 30th November 1938.

PIONEER PARK

Located on the opposite side of the road, a Pioneer Park has been established, with a plaque (see inscription below.)

*Two of the three peppermint trees still stand here and also a fig tree that was brought from the Island of Tenerife in 1841.



*"This park was a gift in memory of The Pioneers of Australind
given in 1965. by E K Clifton, Descendant of M W Clifton.
Erected by Australind & Districts Historical Society 1992"*

During the 1840s The Western Australian Company was formed in London, England, purchasing land in the area to resell to prospective landowners. There was already a horse breeding station in the area and they wanted to continue trading horses, particularly with the British Indian Army, and came up with the name 'Austral-Ind', a combination of Australia and India.

The first settlers arrived in 1841 on the *Parkfield* with Marshall Waller Clifton who was appointed Chief Commissioner of Australind by the Western Australia Company to oversee the settlement. A number of surveyors and labourers came on the *Island Queen* in 1840 to plan and draw up the proposed Australind settlement and by 1842, over 440 settlers had arrived in Australind. The land was to be divided up into small farming lots of approximately 40 hectares. Profits from the sale of land would help finance the transport of more immigrants and labourers to expand the new settlement.

The proposed town site was based on a typical English-style town and port. Marshall Waller Clifton had high expectations of the settlement when he envisaged his town plans. Due to negative comments regarding the settlement reaching London, backers of the scheme pulled out, creating great financial difficulties. Different climatic conditions encountered in Australind (hot summers, wet winters and the poor quality of the sandy soil), meant that farming practices used in England were impractical in Australind, and the settlement struggled. In 1843, most of the early settlers had moved to other locations to try their luck, and by 1875 the settlement was officially abandoned.

Australind remained a small community until the 1970s when it was mainly used as a holiday destination with holiday homes scattered around close to the estuary. Historical buildings remain here such as St Nicholas Church built 1848, (originally a worker's cottage but now believed to be the smallest church in Australia), Upton House built 1847, (once a residence of the Clifton family) and Henton Cottage, (the town's first hotel.)

Australind began to grow again from the 1970s - its growth rate accelerated in the 1980s to the present day, with many families and workers moving into the area attracted by the increased new industries starting up. In the 2011 census, Australind recorded a population of 11,954 and today includes suburbs in its locality: Kingston, Treendale, Galway Green, Leschenault and Clifton Park. It has two high schools, five primary

Summer School 2018

Ever wanted to delve into your family's past? In 2018 the Museum will be hosting classes with Jacqui Graham in family history research as a part of the Stirling Street Arts Centre's Summer School.

Researching family history is a passion for Jacqui, let her share her experience with you! Suitable for any adult interested or currently engaged in family history research. It starts with you! Identify who and why you want to research. Discover the basic do's and don'ts of family history research. Learn some tips and tricks. Byo: USB stick, notebook, lead pencil, eraser, sharpener and ruler.

Ages: 18 +

Cost: \$20

Fri 12th January 9:30 - 11:30

Fri 12th 1:30pm - 3:30pm...

Sat 13th 9:30 - 11:30

Sat 13th January 1:30pm - 3:30pm

Location: Bunbury Museum and Heritage Centre

How to enrol: In person: Cnr of Stirling and Charles Streets, just over from Centrepont.

Over the phone: We can take bookings over the phone but you will need a credit card 9791 1256

Online: Check out our website at www.stirlingstreetarts.com.au.

[illegible]

Dear Santa,

So what I have done may have been bad but I'm pretty sure breaking and entering and stealing peoples food is worse - so let's call it even ...

[illegible]

XMAS QUIZ ANSWERS:-

KMMS QUIZ ANSWERS: 1. Egypt. 2. Stephen. 3. Bells. 4. White. 5. He places his finger on the side of his nose, gives a smile and a nod. 6. Six. 7. Blitzen, Comet, Cupid, Dasher, Dancer, Donner, Vixen, and Prancer.